



# Permanent Freight Data Collection Infrastructure and Archive System

TransPORT  
April 10, 2013

Chris Monsere  
Associate Professor  
Portland State University  
Civil and Environmental Engineering



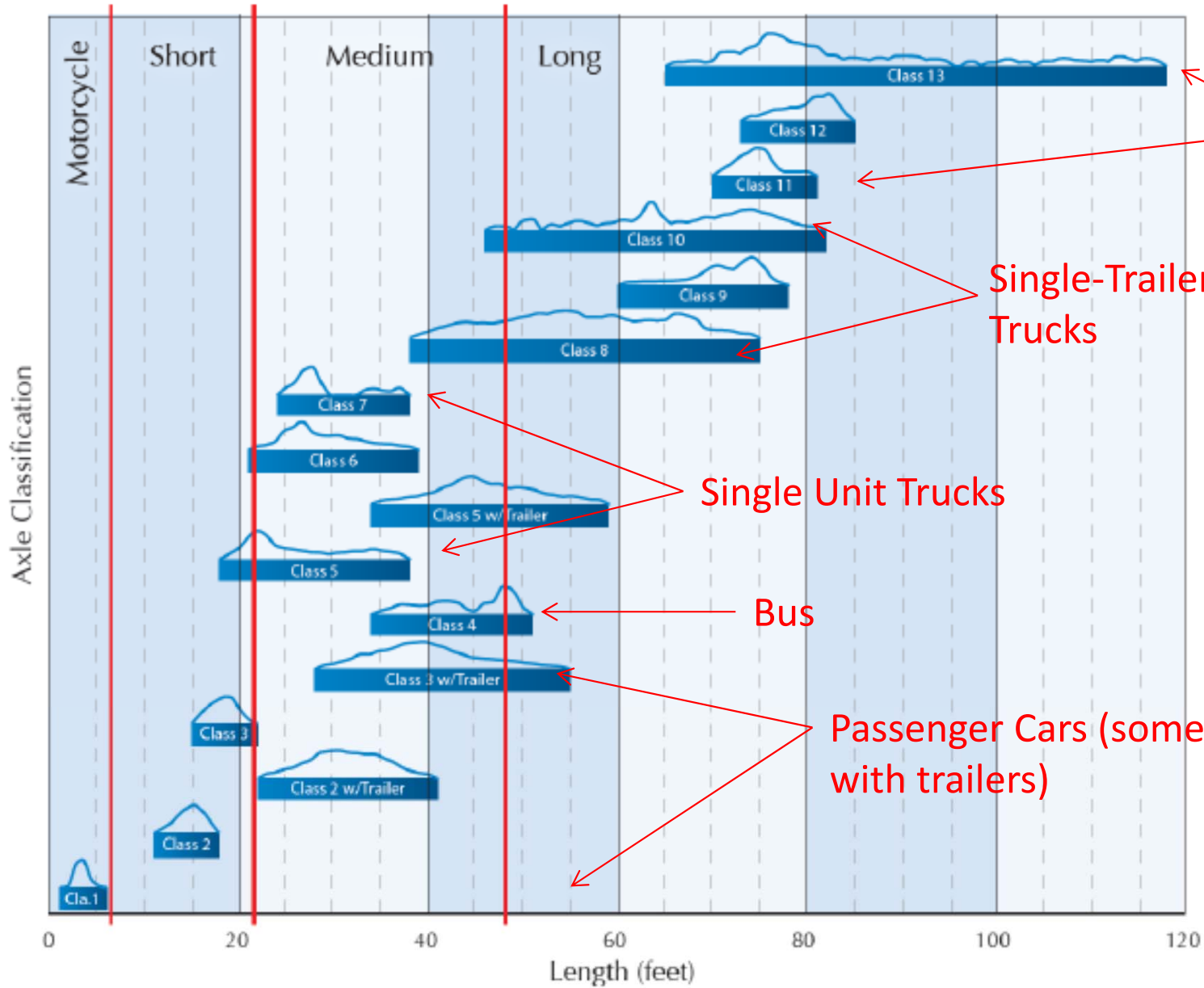
# Objective

- Develop system for permanent truck counts for the region's ITS monitoring system
  - Integrate with PORTAL
  - 20-second intervals, 24 hours per day, 365 days per year
  - Explore arterial applications



# Revised Work Plan

- Task 0. Form project technical advisory committee (TAC)
- Task 1. Review state of the practice
- Task 2. Identify test locations for sensor validation and deployment
- Task 3. Develop truck-count sensors
- Task 4. Calibrate to ground truth observations, deploy sensors at arterial locations and evaluate single-loop length-based classification accuracy
- ~~• Task 5. Integrate test truck count sensors with the ITS network and ODOT ATMS~~
- Task 6. Identify remaining locations for deployment
- Task 7. Purchase and coordinate installation of truck-count sensors
- Task 8. Modify PORTAL and prepare visualization enhancements
- Task 9. Prepare documentation and manual



Vehicle Length by Axle Classification

Multi-Trailer Trucks

Single-Trailer Trucks

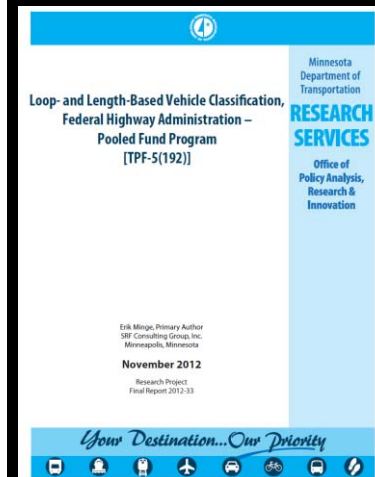
Single Unit Trucks

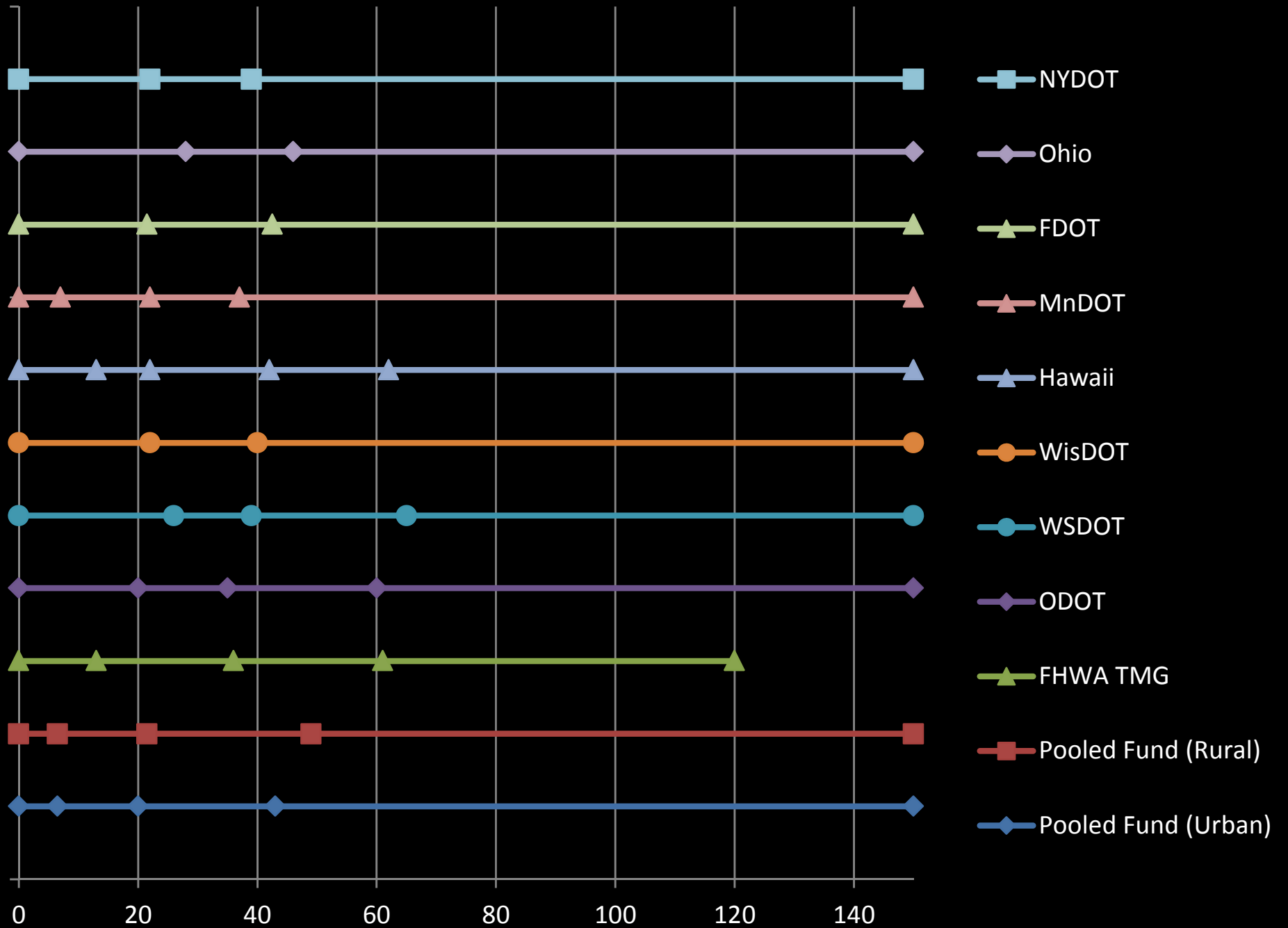
Bus

Passenger Cars (some with trailers)

20 ft in urban

43 ft in urban





# Medium Class

## 1.3.4.3 LBVC3.set



2005-06 Dodge Ram pulling UHaul  
29.8' Video-Measured Length



PU-2009 Ford F-150 w/Camper  
44.4' Video-Measured Length



Truck – Ford E-350 Van (low)  
22.9' Video-Measured Length

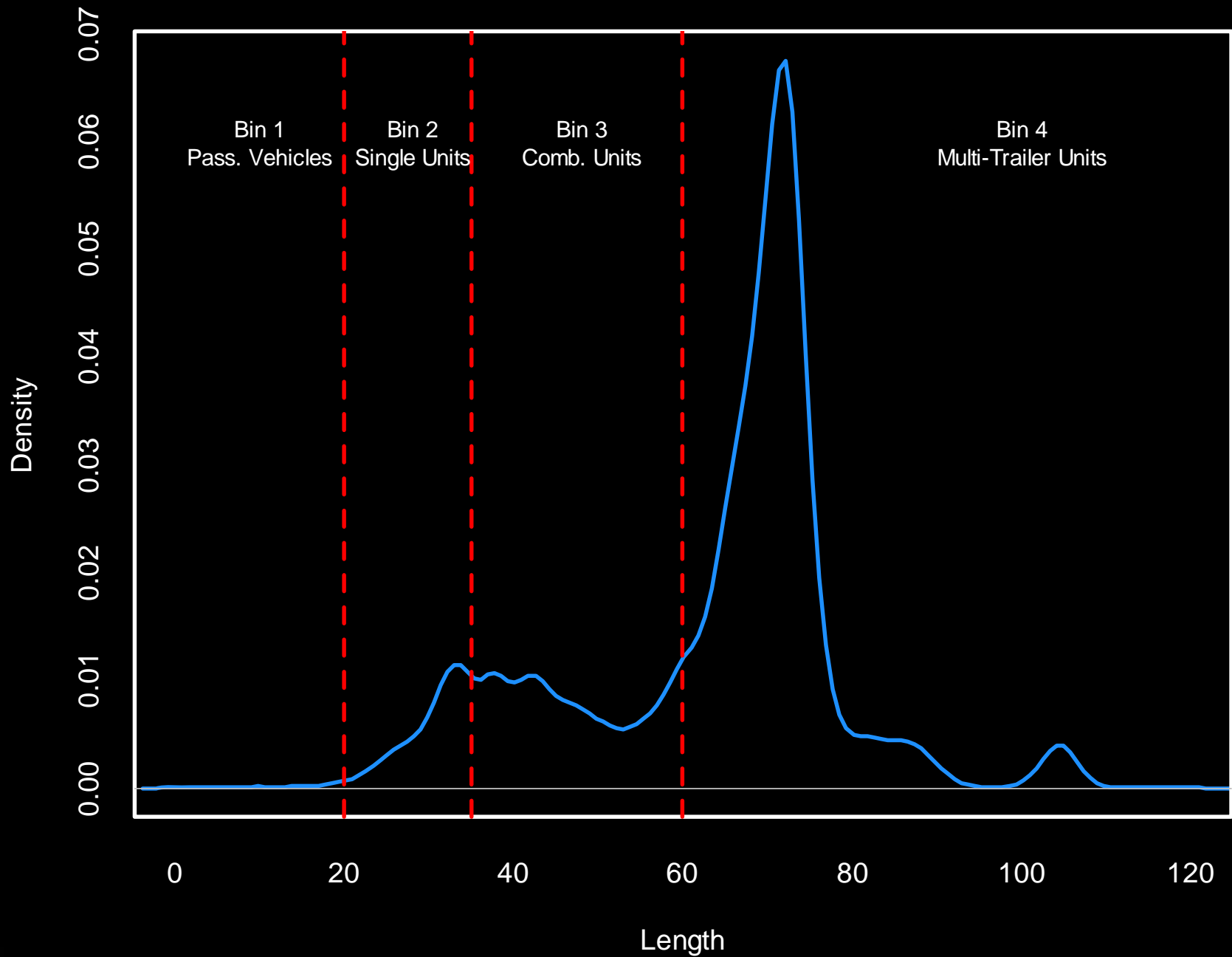


Truck – Freightliner Van (high)  
32.4' Video-Measured Length

Source: Minge et al, FHWA Pooled Fund TPF-5(192), 2012.

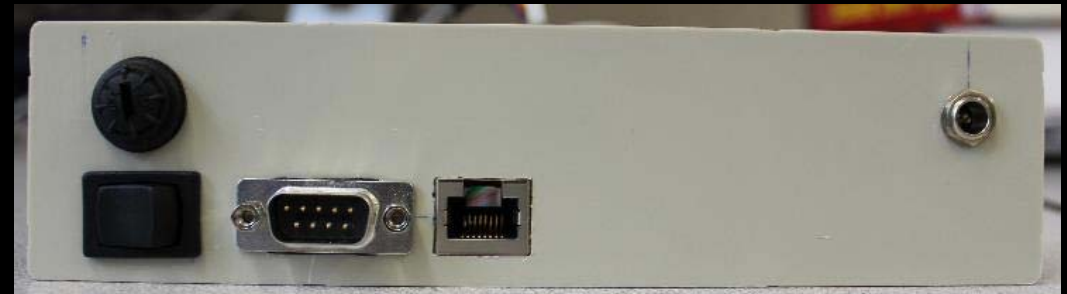
# All Trucks

Mean= 63.28 n= 77935





# OSU TCU Devices



**Rear Panel** - Power jack, Ethernet port, serial data port, rocker switch and fuse holder



**Front Panel** - Power LED, VGA port and USB ports



# Validation I-205 Stafford NB



I-205 NB Stafford



SE 82<sup>nd</sup> Ave / Fremont

# Validation – I-205 Stafford NB

## Length errors by sensitivity level

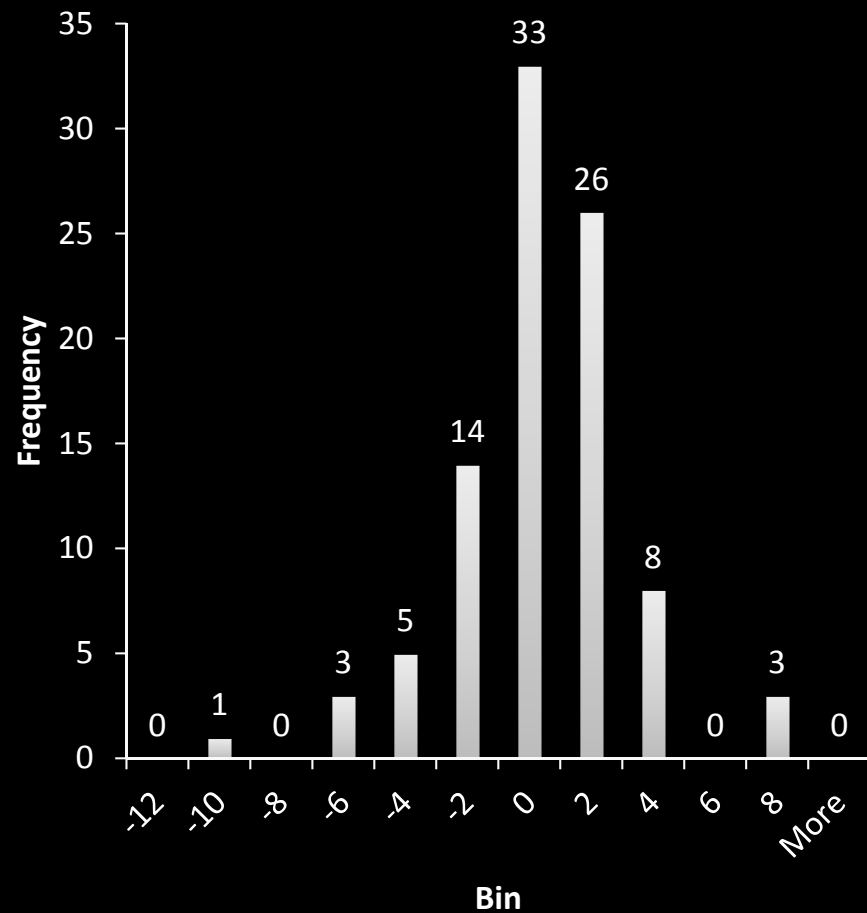
Sensitivity Level	Number of Vehicles in Video	Number of Vehicles Analyzed	Avg. Length Difference (ft.)
3	517	93	-0.69
4	513	30	-0.74
5	484	91	5.22

## Speed errors by sensitivity level

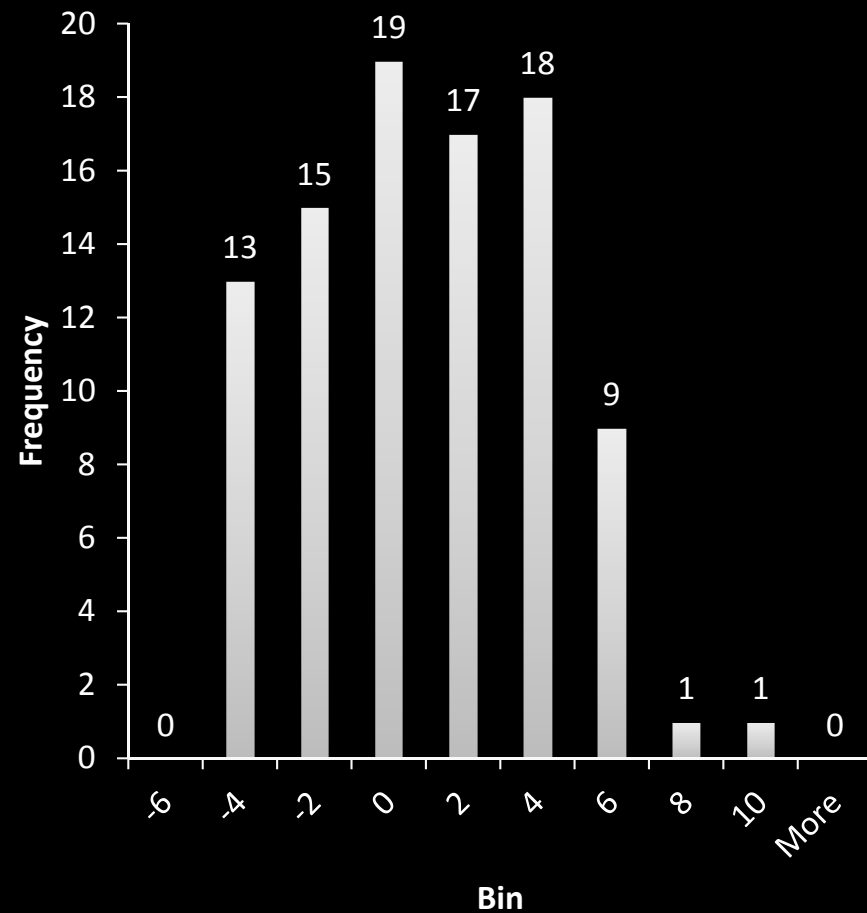
Sensitivity Level	Number of Vehicles in Video	Number of Vehicles Analyzed	Avg. Speed Error (mph)
3	517	93	-0.038
4	513	30	-1.164
5	484	91	-2.41

# Validation I-205 Stafford NB

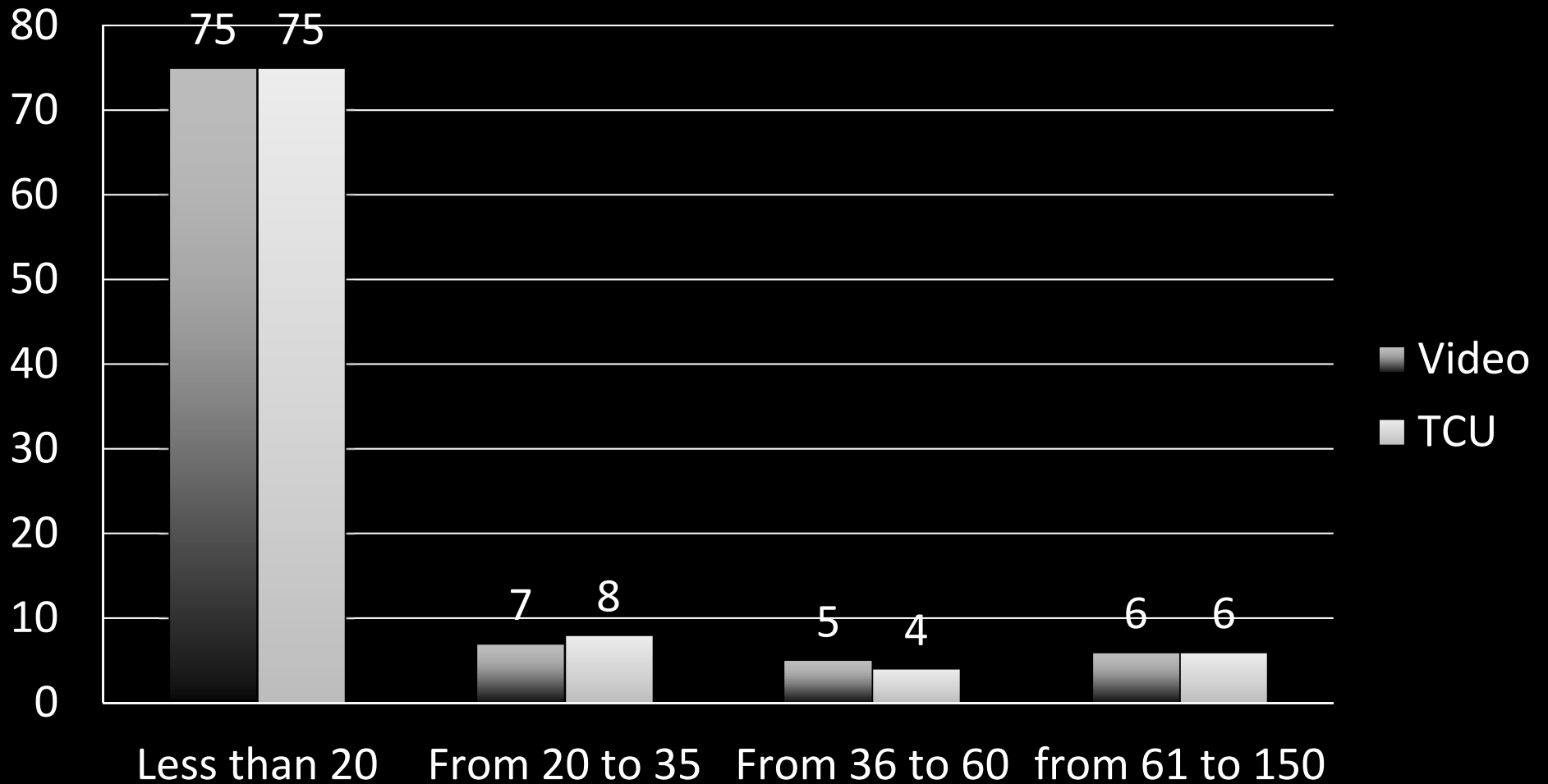
Length error(ft) - Sensitivity Level 3



Speed error(mph) – Sensitivity Level 3



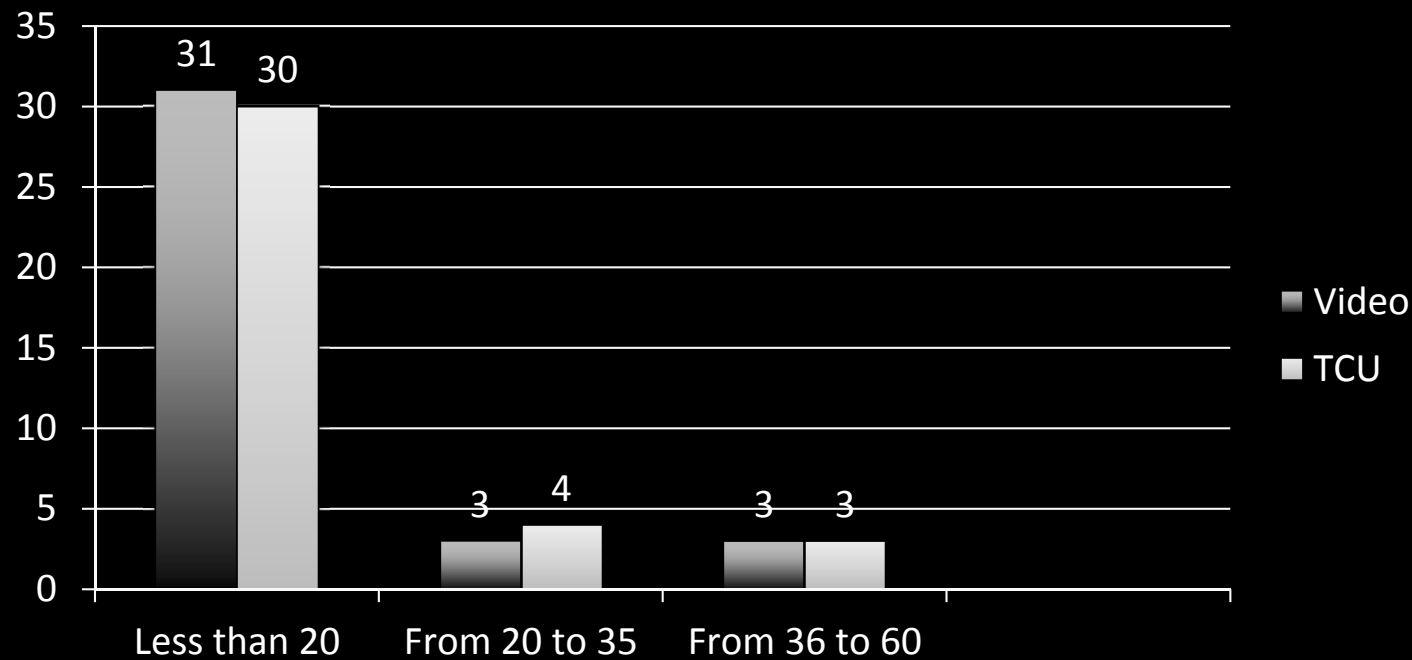
# Binned comparison - Sensitivity 3



# Validation SE 82<sup>nd</sup>

Number of Vehicles in Video	Number of Vehicles Analyzed	Avg. Length Difference (ft.)	Avg. Speed Error (mph)
885	37	2.94	3.28

Comparison of length Classification between video and TCU data-Location 2



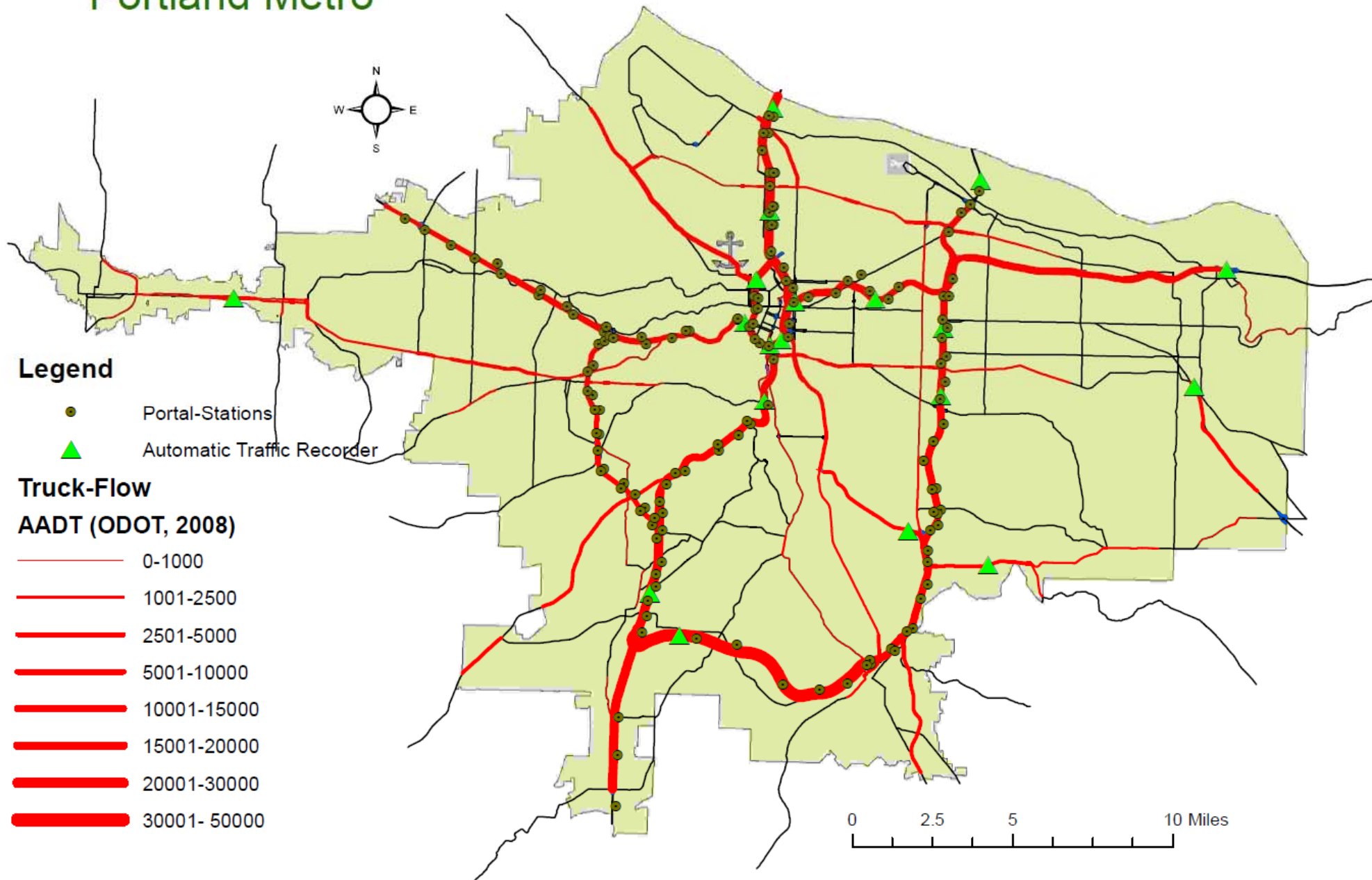
# Next Steps

- Select and install additional arterial locations if can identify willing jurisdictions
- Finish validation of the arterial lengths
- Prepare visualizations of using existing data
- Develop/confirm factors to remove non-freight vehicles from medium classification
- Validate new ODOT ramp meter length bins
- Integrate with PORTAL



# TRAFFIC FLOW MAP

## Portland Metro



# Questions?

Chris Monsere

monsere@pdx.edu 503-725-9746 @Cmonsere

Associate Professor

Portland State University

Civil and Environmental Engineering